



INDOFINE Chemical Company, Inc.

121 Stryker Lane, Bldg. 30, Suite 1 • Hillsborough, NJ 08844 • U.S.A.

Phone: (908) 359-6778 • FAX: (908) 359-1179

website: www.indofinechemical.com

e-mail: chemical@indofinechemical.com

CERTIFICATE OF ANALYSIS

Catalog Number: 020101S

Product Name: **GINSENSIDE Rg1 with HPLC**

Chemical Family: Saponins

Cas Number: [22427-39-0]

Lot Number: 1309387

Chemical Formula: $C_{42}H_{72}O_{14}$

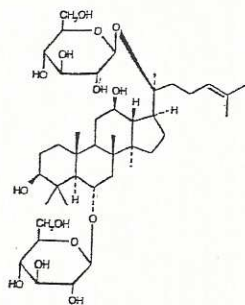
Molecular Weight: 801.03

Appearance: White powder

NMR Spectrum: Enclosed

Storage: This product is stable at ambient temperature for several weeks. However, optimum long-term storage may require lower temperature (<-18°C). Place in a desiccator under vacuum before use.

Purity(HPLC): 99.53%





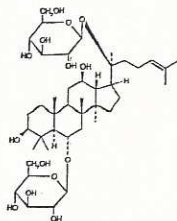
INDOFINE Chemical Company, Inc.

121 Stryker Lane, Bldg. 30, Suite 1 • Hillsborough, NJ 08844 • U.S.A.

Phone: (908) 359-6778 • FAX: (908) 359-1179

website: www.indofinechemical.com

e-mail: chemical@indofinechemical.com



HPLC ANALYSIS

Catalog No.: 020101S

Product Name: Ginsenoside Rg1

Lot No.: 1309387

SAMPLE INFORMATION

Sample Name: GinsenosideRg1

Sample Type: Unknown

Vial: 1:F,2

Injection #: 1

Injection Volume: 10.00 ul

Run Time: 22.0 Minutes

Sample Set Name:

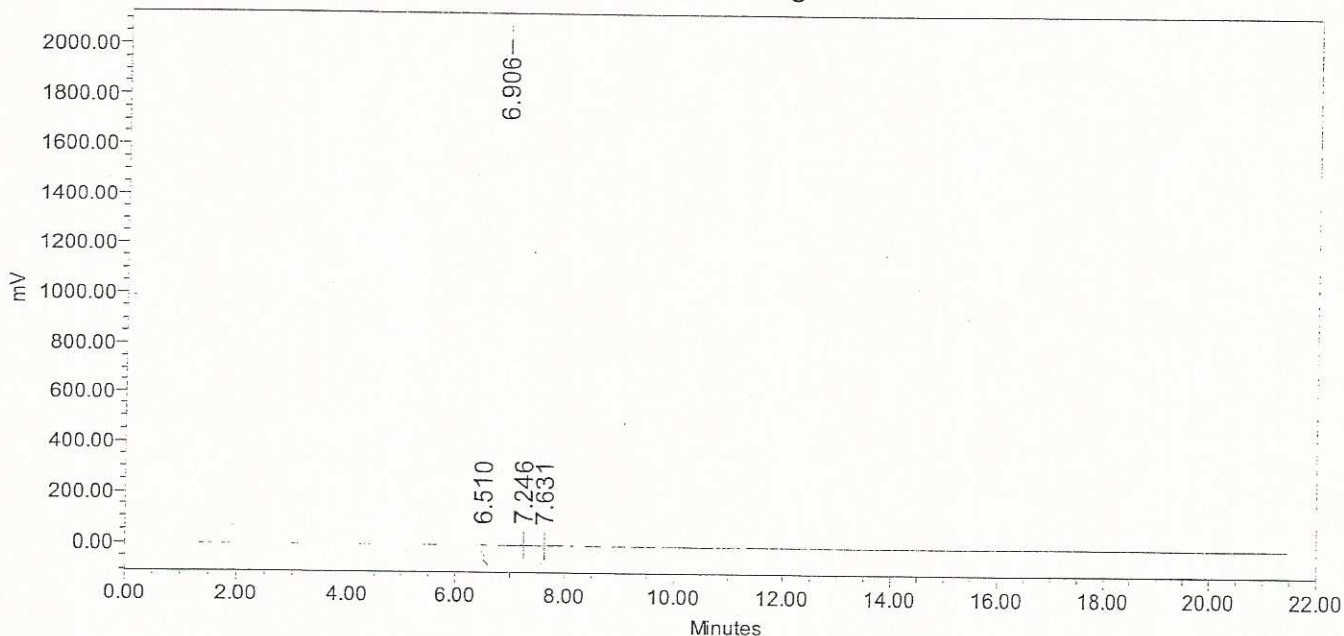
Acq. Method Set: GinsenosideRg1

Processing Method: QC

Channel Name: eSATIN-Ch1

Proc. Chnl. Descr.: Channel 1

Auto-Scaled Chromatogram

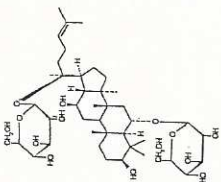


Peak Results

Name	RT	Area	% Area	USP Plate Count	USP Resolution
1	6.510	10460	0.08	6.817094e+004	
2	6.906	12338663	99.53	3.004928e+004	2.580944e+000
3	7.246	32517	0.26		2.098715e+000
4	7.631	15312	0.12		

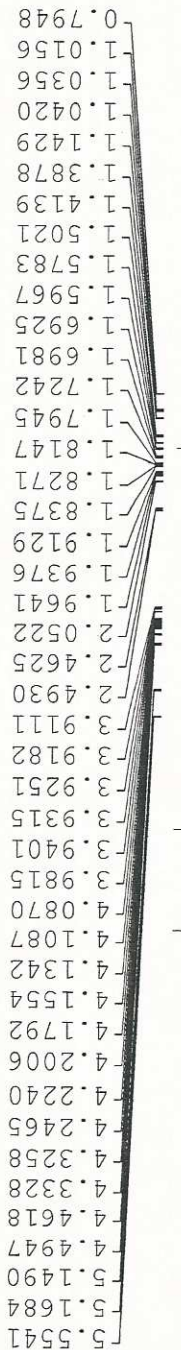


INDOFINE Chemical Company, Inc.
 121 STRYKER LANE
 BLDG. 30, SUITE 1
 HILLSBOROUGH, NJ 08844



Catalog No.: 020101S
 Product Name: Ginsenoside Rg1
 Lot No.: 1309387

GRG1
 PROTON Pyr {E:\nmrdata\lizeyun} lzy 10

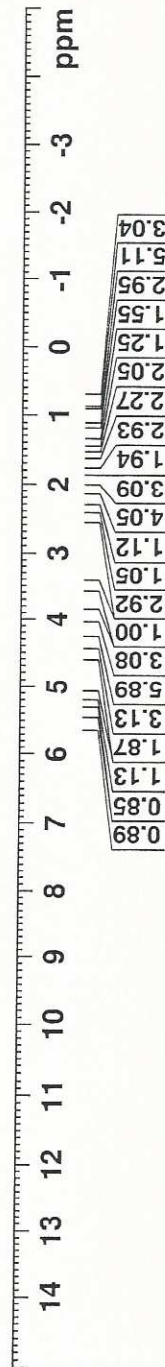


Current Data Parameters
 NAME 09142013
 EXPNO 10
 PROCNO 1

F2 - Acquisition Parameters
 Date_ 20130914
 Time 21.42
 INSTRUM spect
 PROBHD 5 mm PABBO BB-
 PULPROG zgpr
 TD 65536
 SOLVENT Pyr
 NS 16
 DS 2
 SWH 8012.820 Hz
 FIDRES 0.122266 Hz
 AQ 4.0894465 sec
 RG 90.5
 DW 62.400 usec
 DE 6.50 usec
 TE 298.2 K
 D1 1.00000000 sec
 D12 0.00002000 sec
 TD0 1

==== CHANNEL f1 =====
 SF01 400.1320027 MHz
 NUC1 1H
 P1 12.95 usec
 PLW1 15.00000000 W
 PLW9 0.00010062 W

F2 - Processing parameters
 SI 65536
 SF 400.1300000 MHz
 EM
 WDW 0
 SSB 0
 LB 0.30 Hz
 GB 0
 PC 1.00



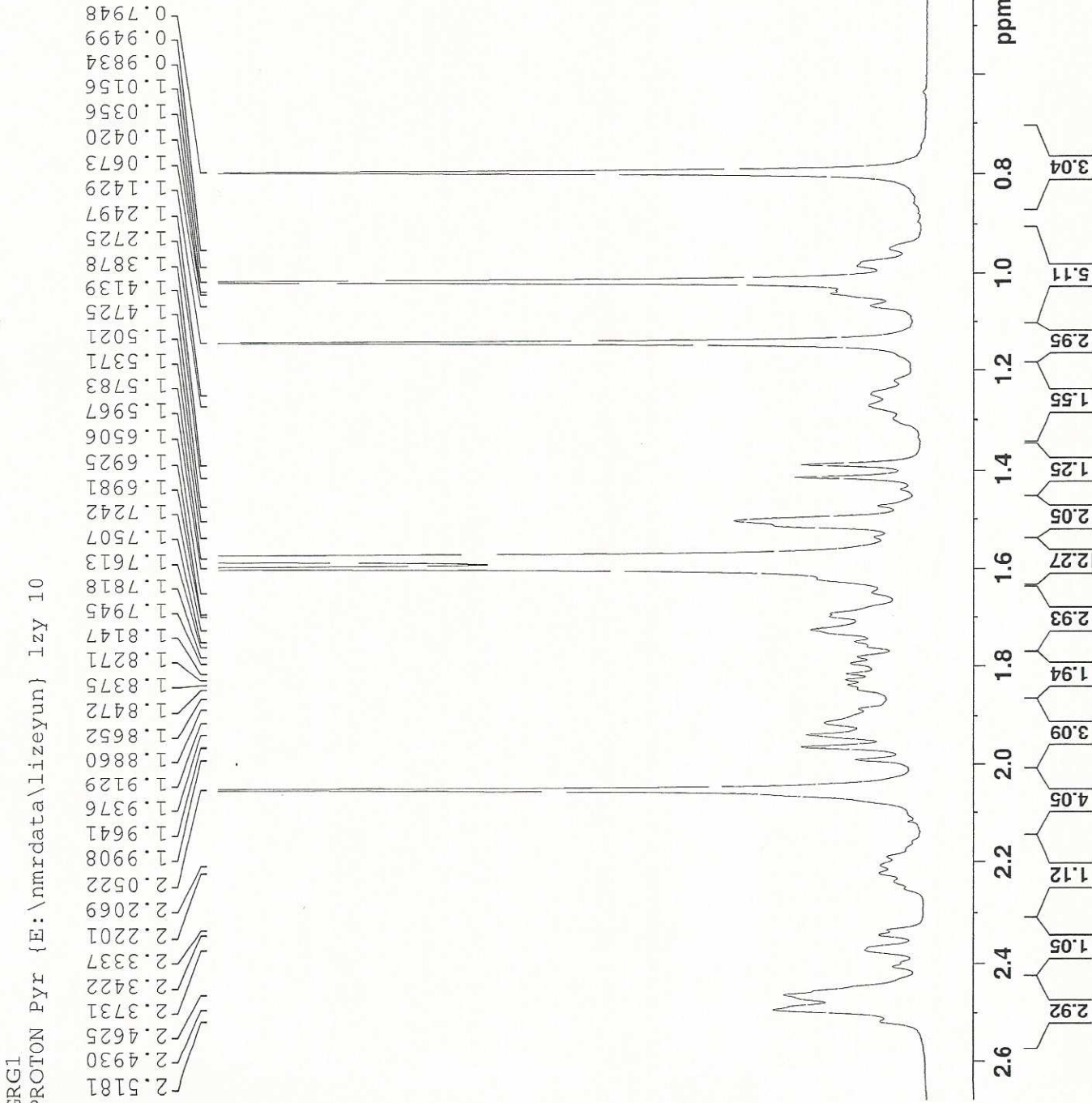
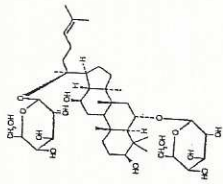


INDOFINE Chemical Company, Inc.
 121 STRYKER LANE
 BLDG. 30, SUITE 1
 HILLSBOROUGH, NJ 08844

Catalog No.: 020101S
 Product Name: Ginsenoside Rg1
 Lot No.: 1309387

GRG1

PROTON Pyr {E:\nmrdata\lizeyun} lzy 10

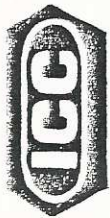


Current Data Parameters
 NAME 09142013
 EXPNO 10
 PROCNO 1

F2 - Acquisition Parameters
 Date_ 20130914
 Time 21.42
 INSTRUM spect
 PROBHD 5 mm PABBO BB-
 PULPROG zgpr
 TD 65536
 SOLVENT Pyr
 NS 16
 DS 2
 SWH 8012.820 Hz
 FIDRES 0.122266 Hz
 AQ 4.0894465 sec
 RG 90.5
 DW 62.400 usec
 DE 6.50 usec
 TE 298.2 K
 D1 1.00000000 sec
 D12 0.00002000 sec
 TD0 1

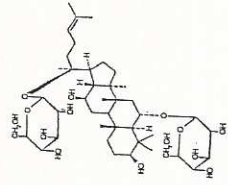
==== CHANNEL f1 =====
 SFO1 400.1320027 MHz
 NUC1 1H
 P1 12.95 usec
 PLW1 15.00000000 W
 PLW9 0.00010062 W

F2 - Processing parameters
 SI 65536
 SF 400.1300000 MHz
 WDW EM
 SSB 0
 LB 0.30 Hz
 GB 0
 PC 1.00



INDOFINE Chemical Company, Inc.
 121 STRYKER LANE
 BLDG. 30, SUITE 1
 HILLSBOROUGH, NJ 08844

GRG1
 PROTON Pyr {E:\nmrdata\lizeyun} lzy 10



Catalog No.: 020101S
 Product Name: Ginsenoside Rg1
 Lot No.: 1309387



Current Data Parameters
 NAME 09142013
 EXPNO 10
 PROCNO 1

F2 - Acquisition Parameters
 Date_ 20130914
 Time 21.42
 INSTRUM spect
 PROBHD 5 mm PABBO BB-
 PULPROG zgpg30
 TD 65536
 SOLVENT Pyr
 NS 16
 DS 2
 SWH 8012.820 Hz
 FIDRES 0.122266 Hz
 AQ 4.0894465 sec
 RG 90.5
 DW 62.400 usec
 DE 6.50 usec
 TE 298.2 K
 D1 1.00000000 sec
 D12 0.00002000 sec
 TD0 1

==== CHANNEL f1 =====
 SF01 400.1320027 MHz
 NUC1 1H
 P1 12.95 usec
 PLW1 15.00000000 W
 PLW9 0.00010062 W

F2 - Processing parameters
 SI 65536
 SF 400.1300000 MHz
 WDW EM
 SSB 0
 LB 0.30 Hz
 GB 0
 PC 1.00

